

Acer Monitor XB323U

LIFECYCLE EXTENSION GUIDE

Contents

Table of Contents

Important Safety Notice.....3

1. Exploded Diagram.....4

2. Wiring connectivity diagram5

3. Mechanical Instruction6

4. Disassembly and Assembly SOP7

5. Troubleshooting13

6. FRU List15

Safety Notice

Any person attempting to service this chassis must familiarize with the chassis and be aware of the necessary safety precautions to be used when serving electronic equipment containing high voltage

Important Safety Notice

Product Announcement:

This product is certificated to meet RoHS Directive and Lead-Free produced definition. Using approved critical components only is recommended when the situation to replace defective parts. Vender assumes no liability express or implied, arising out of any unauthorized modification of design or replacing non-RoHS parts. Service providers assume all liability.

Qualified Repairability:

Proper service and repair is important to the safe, reliable operation of all series products. The service providers recommended by vender should being aware of notices listed in this service manual in order to minimize the risk of personal injury when perform service procedures. Furthermore, the possible existed improper repairing method may damage equipment or products. It is recommended that service engineers should have repairing knowledge, experience, as well as appropriate product training per new model before performing the service procedures.

NOTICE:

! To avoid electrical shocks, the products should be connect to an authorized power cord, and turn off the master power switch each time before removing the AC power cord.

! To prevent the product away from water or exploded in extremely high humidity environment.

! To ensure the continued reliability of this product, use only original manufacturer's specified parts.

! To ensure following safety repairing behavior, put the replaced part on the components side of PWBA, not solder side.

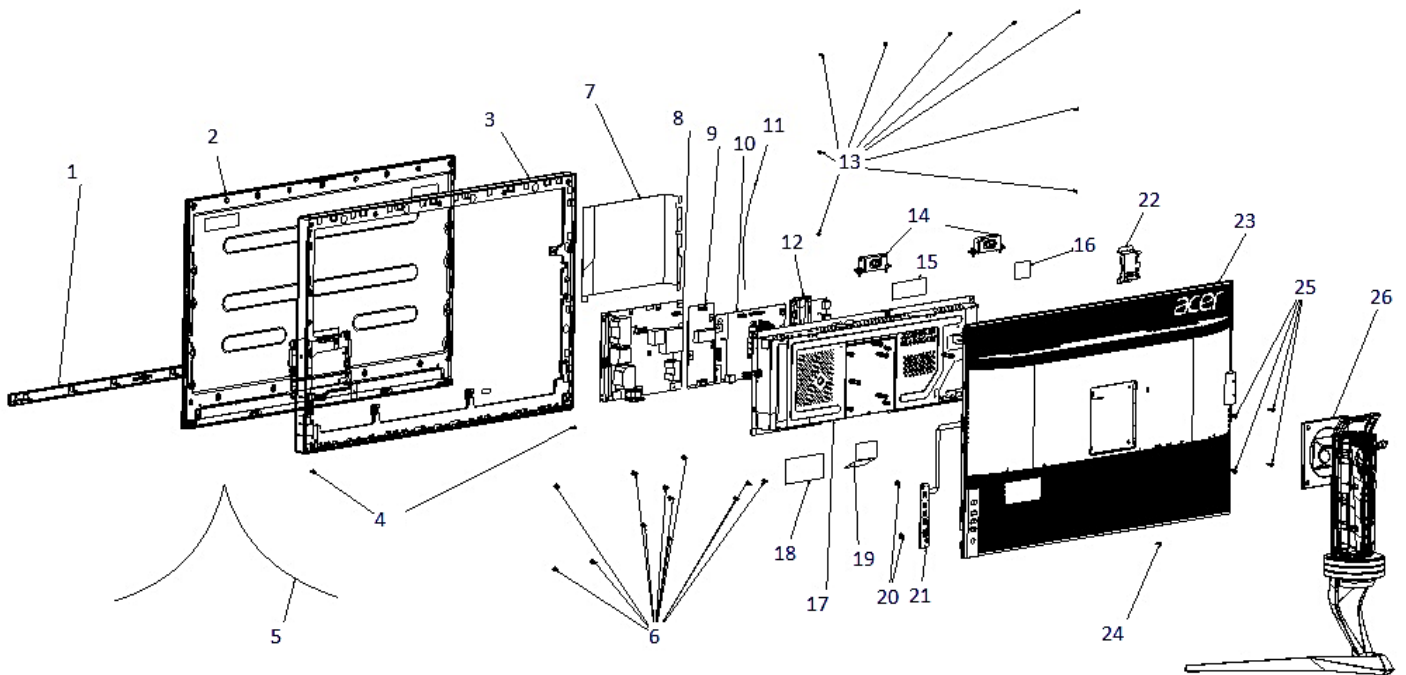
! To ensure using a proper screwdriver, follow the torque and force listed in assembly and disassembly procedures to screw and unscrew screws.

! Using Lead-Free solder to well mounted the parts.

! The fusion point of Lead-Free solder requested in the degree of 220°C.

1. Exploded Diagram

1.1 Product Exploded Diagram



Item	ODM DESCRIPTION
1	ASSY BZL
2	LCDM
3	MID-FRAME
4	SCRW
5	WIRE
6	SCRW
7	MYLAR
8	PCBA SPS BD
9	PCBA LED DRIVER BD
10	PCBA IF BD
11	WIRE
12	PCBA USB BD
13	SCRW

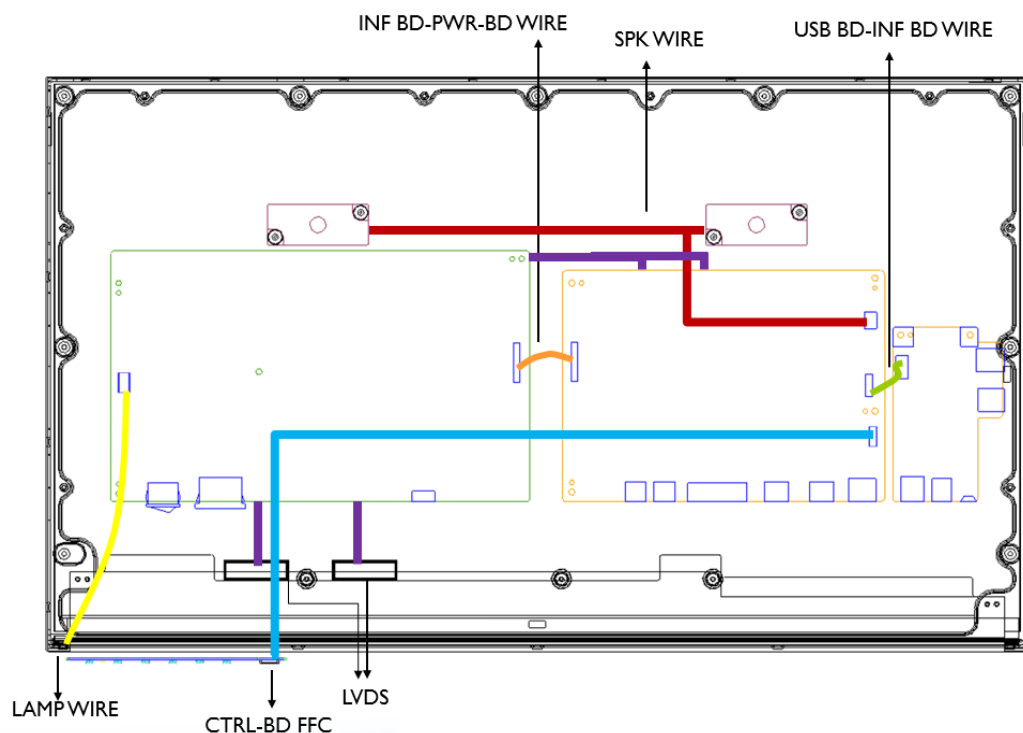
Item	ODM DESCRIPTION
14	SPK
15	TAPE
16	TAPE
17	ASSY SHD
18	TAPE
19	MYLAR
20	SCRW
21	PCBA CTRL BD
22	ASSY USB SHD
23	ASSY RC
24	SCRW
25	SCRW
26	ASSY STAND

2. Wiring connectivity diagram

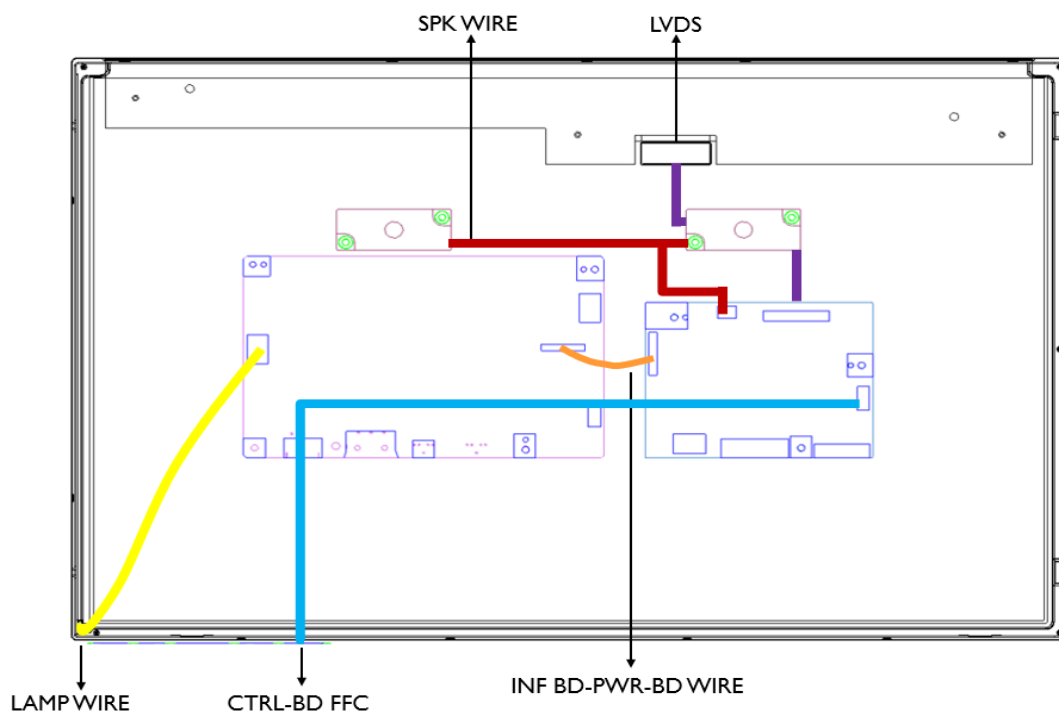
There are four types of wiring diagrams for model XB323U. The wiring connectivity position will be different according to the ACTUAL PCBA connector position. Please base on different SKU refer to below diagram.

NOTE: INF BD= Interface Board, PWR BD=Power Board, CTRL BD= Control Board

1. SKU with USB



2. SKU without USB



Mechanical Instruction

Tools Required

List the type and size of the tools that would typically can be used to disassemble the product to a point

where components and materials requiring selective treatment can be removed.

Tool Description:

- working table
- Screw-driver: Philips-head screwdriver, Hex-head screwdriver
- Knife
- glove
- cleaning cloth
- ESD protection

4. Disassembly and Assembly SOP

XB323U

4.1 Disassembly Procedures

Preparation before disassemble

1. Clean the room for disassemble
2. Identify the area for monitor
3. Check the position that the monitors be placed and the quantity of the monitor ;prepare the area for material flow; according to the actual condition plan the disassemble layout
4. Prepare the implement, equipment, materials as bellow:
 - 1) working table
 - 2) Screw-driver: Philips-head screwdriver, Hex-head screwdriver
 - 3) knife
 - 4) glove
 - 5) cleaning cloth
 - 6) ESD protection



After unplugging the power cord, the power board still have power energe. Please pay attention when disassembling/assembling Power BD.

S1

Disassemble the RC(Rear Case), stand and base

Before Disassembling & Assembling, monitor need to be put on the sponge and the Insulation glove must be wore during the process.

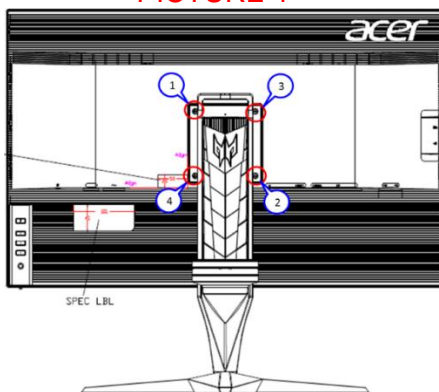
Unlock 4 RC screws and disassemble stand from RC as picture 1.

Unlock RC center and disassemble RC from MF as picture 2.

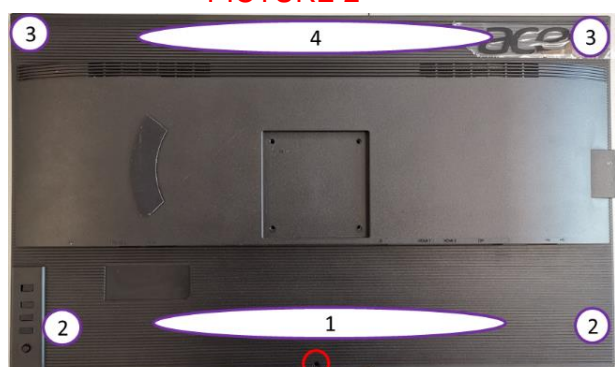
Tear off adhesive tape and CTRL FFC from RC as picture 3.

Unlock 2 CTRL BD screws and disassemble CTRL BD from RC as picture 4.

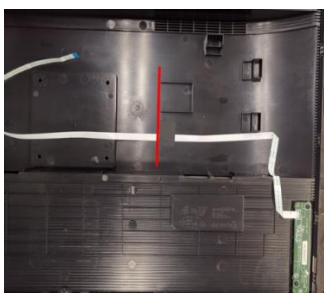
PICTURE 1



PICTURE 2



PICTURE 3



PICTURE 4



S2 Disassemble Lamp wire	Disassemble Mylar from SHD as picture 1. Tear off 6 pieces of adhesive tapes from lamp wire as picture 2 Extract lamp wire from SHD as picture 3.
<p>PICTURE 1</p> 	<p>PICTURE 2</p>  <p>PICTURE 3</p> 
S3 Disassemble SHD	Tear off 3 pieces of conductive tapes from SHD as picture 1 Disassemble SHD from MF as picture 2. Tear off yellow tape and extract LVDS wire from panel as picture 3.
<p>PICTURE 1</p> 	<p>PICTURE 2</p>  <p>PICTURE 3</p> 
S4 Disassemble the TRIM and MF.	Unlock 2 TRIM screws and disassemble TRIM from MF as picture 1. Unlock 9 MF screws, disassemble MF from panel and tear off 2 pieces of adhesive tapes as picture 2. Extract lamp wire from panel as picture 3.
<p>PICTURE 1</p> 	<p>PICTURE 2</p>  <p>PICTURE 3</p> 

S5

Disassemble PCBAs from SHD

Unlock 12 PCBA screws as picture 1.
 Disassemble USB BD from SHD and extract USB wire from USB BD as picture 2.
 Disassemble I/F BD from SHD, extract P/BD wire and SPK wire from I/F BD, then extract LVDS wire and USB wire from I/F BD as picture 3.
 Disassemble DRV BD and extract DRV wire and DRV BD wire from DRV BD as picture 4.
 Disassemble P/BD from SHD as picture 5.
 Tear off 3 pieces of adhesive tapes as picture 6.
 Disassemble SPK from SHD as picture 7.

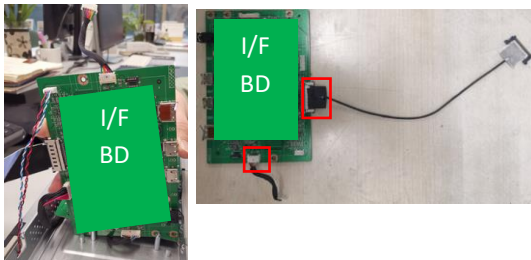
PICTURE 1



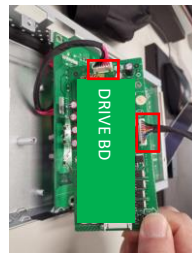
PICTURE 2



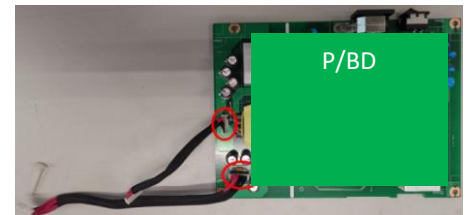
PICTURE 3



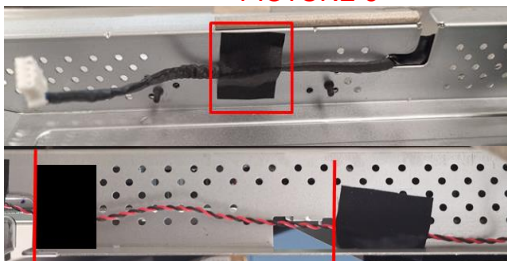
PICTURE 4



PICTURE 5



PICTURE 6



PICTURE 7



NOTE: Circuit boards >10 cm² has been highlighted with the yellow rectangle as above image shows. Please detach the Circuit boards and follow local regulations for disposal.

4.2 Assembly Procedures

Preparation before assemble:

1. Clean the room for work
2. Identify the area for material
3. Prepare the implement, equipment, materials as bellow:

- 1) working table
- 2) Screw-driver
- 3) Knife
- 4) glove
- 5) cleaning cloth
- 6) ESD protection



After unplugging the power cord, the power board still have power energy. Please pay attention when disassembling/assembling Power BD.

S1

Assemble PCBAs into SHD

Before Disassembling & Assembling, monitor need to be put on the sponge and the Insulation glove must be wore during the process.

Assemble SPK to SHD as picture 1.

Paste 3 pieces of adhesive tapes to fix SPK wire as picture 2.

Insert P/BD wire and DRV BD wire to P/BD as picture 3.

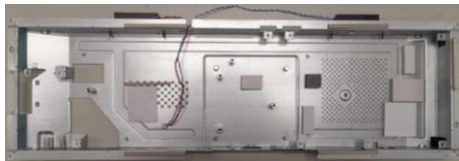
Assemble P/BD to SHD and assemble P/BD Mylar as picture 4.

Insert DRV wire and DRV BD wire to DRV BD, assemble DRV BD to SHD as picture 5
Insert LVDS wire, USB wire, P/BD wire and SPK wire to I/F BD and assemble I/F BD to SHD as picture 6.

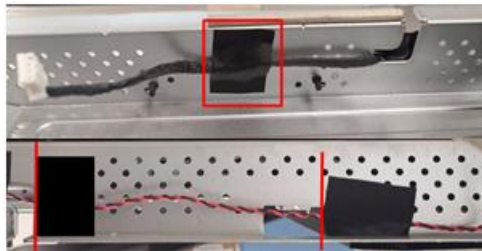
Insert USB wire to USB BD and assemble USB BD to SHD as picture 7.

Lock 12 PCBA screws as picture 8.

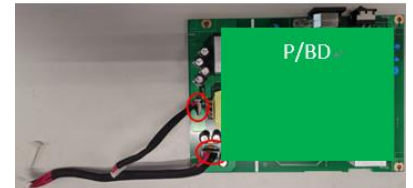
PICTURE 1



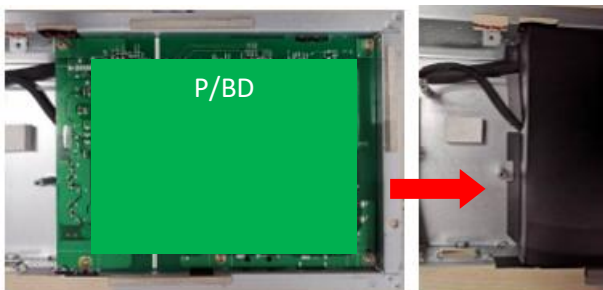
PICTURE 2



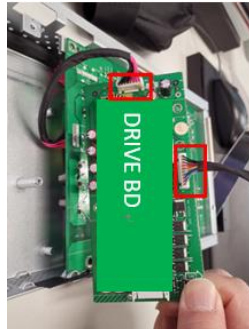
PICTURE 3



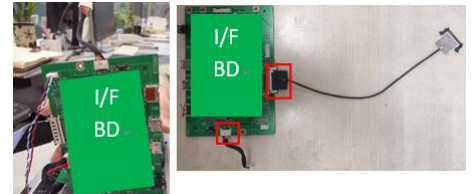
PICTURE 4



PICTURE 5



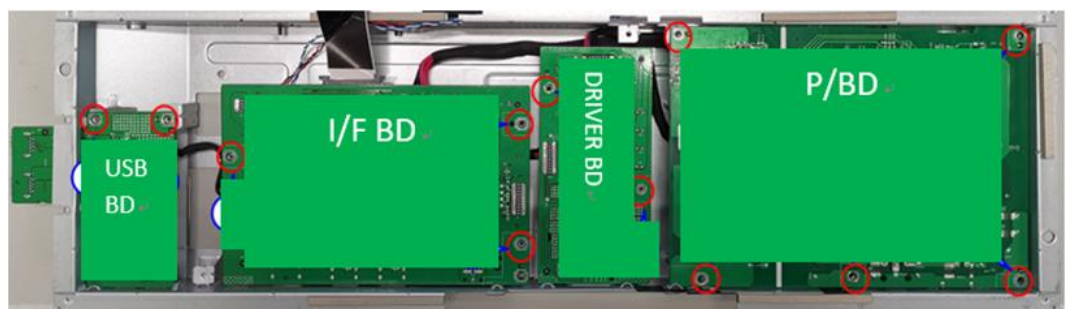
PICTURE 6


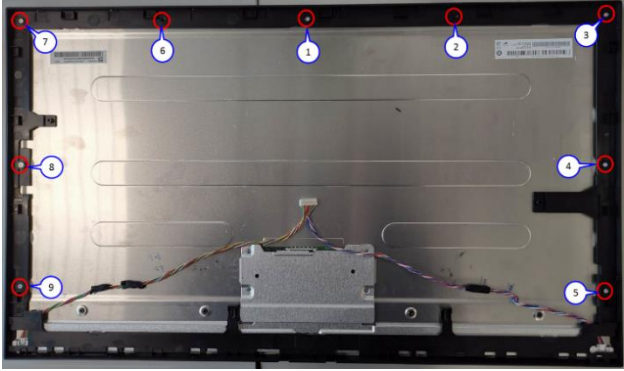
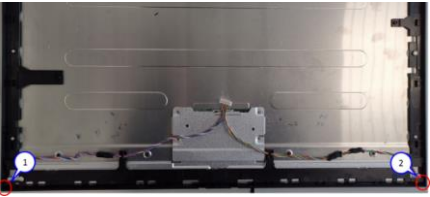
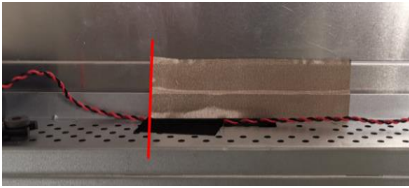
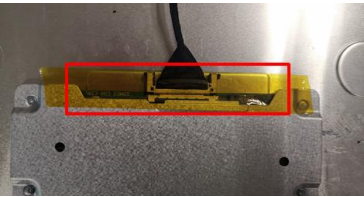



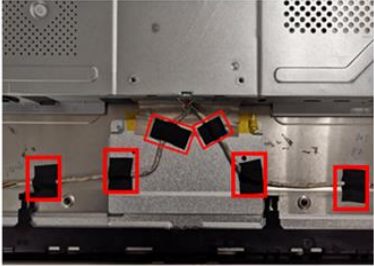



PICTURE 7



PICTURE 8



<p>S2 Assemble Panel to MF</p>	<p>Insert lamp wire to panel as picture 1. Paste 2 pieces of adhesive tapes to panel and assemble MF to panel and lock 9 MF screws as picture 2.</p>
<p>PICTURE 1</p> 	<p>PICTURE 2</p> 
<p>S3 Assemble Trim and SHD</p>	<p>Assemble TRIM to MF and lock 2 TRIM screws as picture 1. Insert LVDS wire to panel and paste yellow tape to LVDS wire as picture 2. Locate SHD to MF as picture 3. Paste 3 pieces of conductive tapes to SHD as picture 4</p>
<p>PICTURE 1</p>  <p>PICTURE 4</p> 	<p>PICTURE 2</p>  <p>PICTURE 3</p>  
<p>S4 Assemble Lamp wire</p>	<p>Insert lamp wire to SHD as picture 1. Paste 6 pieces of adhesive tapes to fix lamp wire as picture 2. Assemble Mylar to SHD as picture 3.</p>
<p>PICTURE 1</p> 	<p>PICTURE 2</p>  <p>PICTURE 3</p> 

S5

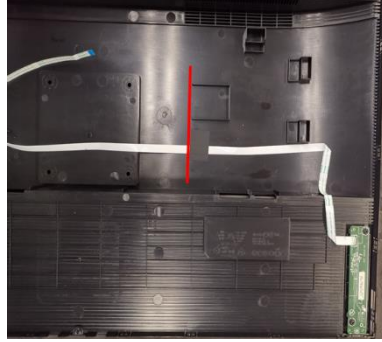
Assemble CTRL BD, RC and ASSY Stand.

Assemble CTRL BD to RC and lock 2 CTRL BD screws as picture 1.
 Arrange CTRL BD FFC on RC and paste adhesive as picture 2.
 Insert CTRL FFC to IF BD and paste AL foil on SHD as picture 4.
 Assemble RC to MF and lock RC center screw as picture 5.
 Assemble stand to RC and lock 4 RC screws as picture 6.

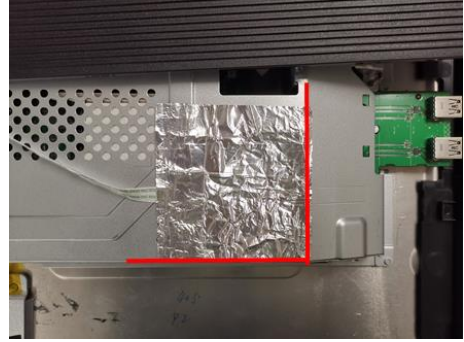
PICTURE 1



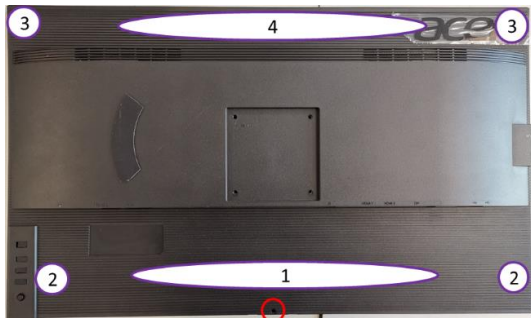
PICTURE 2



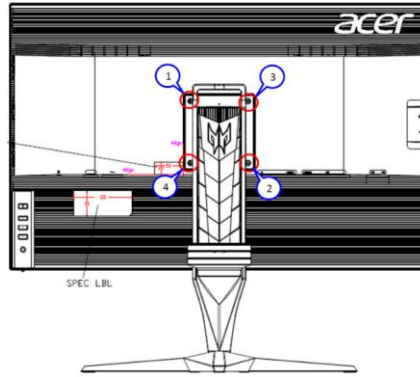
PICTURE 3



PICTURE 4



PICTURE 5



NOTE: Circuit boards >10 cm² has been highlighted with the yellow rectangle as above image shows. Please detach the Circuit boards and follow local regulations for disposal.

5. Troubleshooting

TROUBLESHOOTING

Before sending your LCD monitor for servicing, please check the trouble-shooting list below to see if you can self-diagnose the problem.

(VGA Mode)

Problems	Current Status	Remedy
No Picture	LED ON	<ul style="list-style-type: none"> Using OSD, adjust brightness and contrast to maximum or reset to their default settings.
	LED OFF	<ul style="list-style-type: none"> Check the power switch.
		<ul style="list-style-type: none"> Check if AC power cord is properly connected to the monitor.
	LED displays amber color	<ul style="list-style-type: none"> Check if video signal cable is properly connected at the back of monitor.
		<ul style="list-style-type: none"> Check if the power of computer system is ON.
Abnormal Picture	Unstable Picture	<ul style="list-style-type: none"> Check if the specification of graphics adapter and monitor is in compliance which may be causing the input signal frequency mismatch.
	Display is missing, center shift, or too small or too large in display size	<ul style="list-style-type: none"> Using OSD, adjust RESOLUTION, CLOCK, CLOCK-PHASE, H-POSITION and V-POSITION with non-standard signals. Using OSD, in case of missing full-screen image, please select other resolution or other vertical refresh timing. Using OSD, in case of missing full-screen image, please select other resolution or other vertical refresh timing. Wait for a few seconds after adjusting the size of the image before changing or disconnecting the signal cable or powering OFF the monitor.
Abnormal Sound (Only Audio-Input model) (Optional)	No sound, or sound level is too low	<ul style="list-style-type: none"> Check the audio cable with the host PC is connected.
		<ul style="list-style-type: none"> Check if the volume setup of the host PC is in minimum position and try to raise the volume level.

(HDMI/DP Mode)

Problems	Current Status	Remedy
No Picture	LED ON	<ul style="list-style-type: none"> Using OSD, adjust brightness and contrast to maximum or reset to their default settings.
	LED OFF	<ul style="list-style-type: none"> Check the power switch.
		<ul style="list-style-type: none"> Check if AC power cord is properly connected to the monitor.
	LED displays amber color	<ul style="list-style-type: none"> Check if video signal cable is properly connected at the back of monitor.
		<ul style="list-style-type: none"> Check if the power of computer system is ON.
Abnormal Sound (Only Audio-Input model) (Optional)	No sound, or sound level is too low	<ul style="list-style-type: none"> Check the audio cable with the host PC is connected.
		<ul style="list-style-type: none"> Check if the volume setup of the host PC is in minimum position and try to raise the volume level.

6. FRU List

This chapter gives you the FRU (Field Replaceable Unit) listing in global configurations of ACER XB323U. Refer to this chapter whenever ordering for parts to repair or for RMA (Return Merchandise Authorization).

Please note that WHEN ORDERING FRU PARTS, you should check the most up-to-date information available on your regional web or channel. For whatever reasons a part number change is made, it will not be noted on the printed Service Guide. For AUTHORIZED SERVICE PROVIDERS, your office may have a DIFFERENT part number code from those given in the FRU list of this printed Service Guide. You MUST use the local FRU list provided by your regional office to order FRU parts for repair and service of customer machines

NOTE: To scrap or to return the defective parts, you should follow the local government ordinance or regulations on how to dispose it properly, or follow the rules set by your regional office on how to return it.

Category	ACER DESCRIPTION	Description	PART NO.
LCD			
	LED LCD Panel AUO 32W QHD M320DAN02.2 400nit 5ms 1000:1	LCM 32W M320DAN02.2	KL.32005.012
BOARD			
	MAIN BOARD 2H1DP+S+U AUO	PCBA IF BD MI S XB323U 170 L5	55.TKWM3.007
	POWER BOARD 2H1DP+S+U AUO	PCBA SPS BD MI XB323U	55.TKWM3.002
	FUNCTION KEY BOARD WITH WIRE	PCBA CTRL BD MI XB323U	55.TKWM3.003
	USB BOARD	PCBA USB BD MI XB323U	55.TKWM3.004
	LED DRIVER BOARD AUO	PCBA LED DRV BD MI XB323U	55.TKWM3.005